

Vodafone Mobile Connect

Quick Installation Guide

Important

Install software before inserting data card
or attaching USB modem or phone



vodafone

Welcome

Insert the CD and install the Vodafone Mobile Connect software before you insert your data card or attach your device to your computer.

Welcome to the world of mobile communications! Once you have installed the Vodafone Mobile Connect software you will be able to:

- Make mobile data connections over the Vodafone mobile phone network, e.g. to browse the internet, or to pick up your email
- Make WLAN* data connections over Wireless Local Area Networks (WLANs), e.g. use WLAN in a hotel, or with a broadband internet router at home†
- Write and receive SMS text messages with your computer†
- Monitor approximately how much data you transfer, and how long you connect.

In addition, the Vodafone Mobile Connect software includes optimisation software. This speeds up any mobile data connection opened using the program.

To use this software, you need:

- A computer running Microsoft® Windows® 2000, XP® or Vista®, or a computer running Mac OS® X 10.3.5 or above.
- A CD drive
- At least 100 MB free disk space and 128 MB RAM

Depending on the device you wish to use with the Vodafone Mobile Connect software, you will also need:

- A Type II PC Card (PCMCIA) slot, supporting CardBus
- An Expresscard slot
- A USB or USB 2.0 socket
- A Bluetooth-enabled computer and device
- A computer with a built-in data card.

Ensure you read and observe the manufacturer's precautions and safety information provided with your chosen device.

* WLAN is not supported by all mobile network operators.

† WLAN and SMS are currently only supported on computers running Microsoft Windows.

Install the Software (Microsoft® Windows®)

01

Install the software and re-start your computer.

Do not insert your data card or attach your device before you have installed the software. If you have already inserted your data card, please remove it. Similarly, if you had already attached your USB modem, please detach it.

Insert the Vodafone Mobile Connect software CD and follow the on-screen installation instructions.

When installation is complete, you will be asked to re-start your computer before proceeding with steps 02 and 03.

Tip:

To remove a data card from your computer, click the "Safely Remove Hardware" icon in the Notification Area (the "System Tray") to allow Windows to shut down the data card properly. You can then use the eject button or lever on your computer to remove the data card. In contrast, most USB devices can simply be detached without stopping them first.

02

Insert your SIM into your data card or device.

Your SIM (Subscriber Identity Module) is the small, postage-stamp-sized chip that you received together with your mobile subscriber contract.

Make sure the gold contacts on your SIM match up with the contacts on your device, and your SIM is aligned as shown in the illustration on the device.

If you are using the software on a notebook with a built-in data card, the SIM may already be present.

03

Insert or attach your device when prompted.

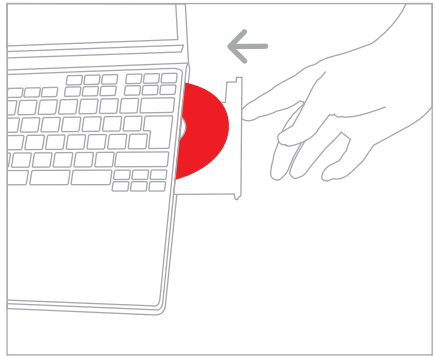
After you have installed the software, and your computer has re-started, start the Vodafone Mobile Connect software and follow the on-screen instructions to set up your device.

If you need to make any changes to the way your device is set up, e.g. special network settings or similar, you can select the device in the "Manage Devices" view and edit settings later.



Safely Remove Hardware icon

01

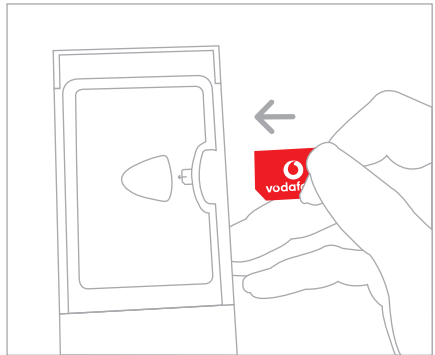


Install the software and re-start your computer.

Tip:

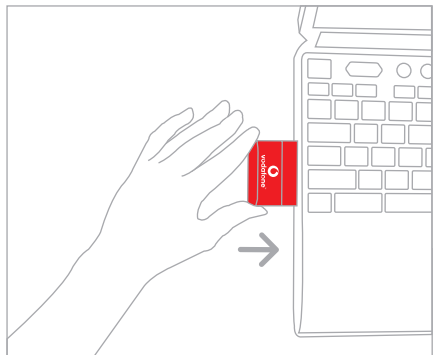
- Look for the illustration on your data card, USB modem or phone.
- Make sure the gold contacts on your SIM will touch the contacts on your device.
- Check the cut-away corner of your SIM is aligned with the shape of the SIM slot on your device.

02



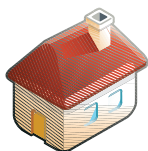
Insert your SIM into your device, e.g. your data card.

03

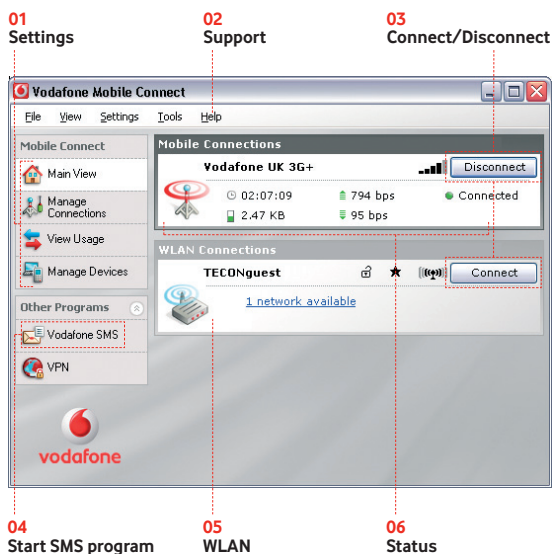


Attach or insert your device when prompted.

Software Overview



The Vodafone Mobile Connect software is designed to let you perform the most common actions by clicking on a single button.



Tip:

The Help Topics in the Help menu contain details of all the features of Vodafone Mobile Connect. The Help items are written to explain features clearly, and laid out for easy on-screen reading.

01 Settings

Additional software settings

02 Support

Hotline and internet contact details

03 Connect/Disconnect

Connect via the mobile phone network, or WLAN*

04 Start SMS program

Send, receive and manage SMS text messages

05 WLAN*

View available WLANs, and check their status

06 Status

Check the status of your mobile device and the mobile network.

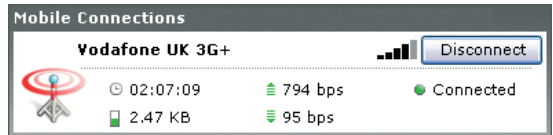
* WLAN is not supported by all mobile network operators.

Open a Mobile Connection



To browse web pages or collect your email, you need to connect to the internet. The Vodafone Mobile Connect software provides two buttons to open such a connection. When you have started the program, and have the main window open, you will see one Connect button in the panel entitled “Mobile Connections” and one in the panel entitled “WLAN Connections”*.

Mobile Connections



Tip:

You can check the strength of the mobile network signal by looking at the symbol to the left of the “Mobile Connections” Connect button or looking at the icon in the Windows Notification area. The more bars that are filled in, the better the signal quality.



Mobile signal strength in Windows Notification area.



Mobile signal strength in main view and mini-window.

If a mobile network has been found, the Connect button in the “Mobile Connections” panel will be enabled. Click this button to open a connection to the internet via the mobile phone network.

When connected, the Connect button text changes to “Disconnect”, a green indicator will appear below the button, and the Mobile Connections icon will be animated. Clicking the same button again will then close the connection.

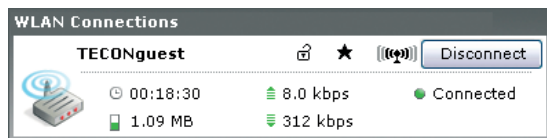
To open a mobile connection, you must be within coverage of a mobile network. As a rule, anywhere you can make a call on your mobile phone, you should be able to open a data connection with the Vodafone Mobile Connect software.

* WLAN is not supported by all mobile network operators.

Open a WLAN Connection*



Click the "WLAN Connections" Connect button to browse web pages or collect your email via a WLAN (Wireless Local Area Network)*. The WLAN Connect button is on the right of the WLAN Connections panel in the main software window.



Tip:

You can check the strength of a WLAN signal by looking at the symbol to the left of the "WLAN Connections" Connect button or looking at the icon in the Windows Notification area.

The more bars that are filled in, the better the signal quality.



WLAN signal strength in Windows Notification area.



WLAN signal strength in main view and mini-window.

If a WLAN has been found, the Connect button in the WLAN Connections panel will be enabled. In addition, if several WLANs have been found, a text link is shown in the middle of the WLAN Connections panel. You can view a list of all available WLANs by clicking this link.

A star is shown in the first column of the Available WLANs list if you have previously saved the settings for a WLAN, making it a preferred WLAN.

WLANs, Hotspots and Broadband Routers

As well as being used in homes and offices, WLANs can sometimes be found in public places like hotels and airports. Such public WLANs are known as "hotspots" and often charge a fee for internet access.

The Vodafone Mobile Connect software allows you to connect to WLAN hotspots. You can also connect to private WLANs, such as a broadband WLAN router that you might use at home.

Monitor SMS and Connection Status



Main Window

You do not need to have the main program window open all the time the software is running, as closing it does not exit the program.

Mini-Window

The mini-window is just large enough to give you complete details of the current connection.



Windows Notification Area

The Vodafone Mobile Connect software displays an icon in the Windows Notification area. This program icon shows mobile and WLAN* signal strength, and connection status.

Right-clicking on the icon opens a menu containing the main program commands, such as Connect, Disconnect and Exit. You can therefore manage your connections without any windows open at all.

Vodafone SMS Icon

An SMS icon is displayed in the Notification area if one or more SMS text messages have been received. When an SMS is received, a popup window appears with the text of the message. You can click on this popup to respond to the SMS.

Tip:

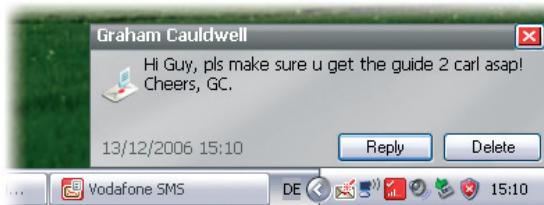
Toggle between the mini-window and the main view using the middle button at the top right, or just double-click on the title bar of the window.



Minimise
Mini-window
Close window

Tip:

To exit the software completely, open the File menu, or right-click the Notification area icon, and then select "Exit."



The SMS popup window will fade out by itself if ignored. The SMS icon will remain to show that an SMS has been received.

* WLAN is not supported by all mobile network operators.

Use SMS Text Messaging



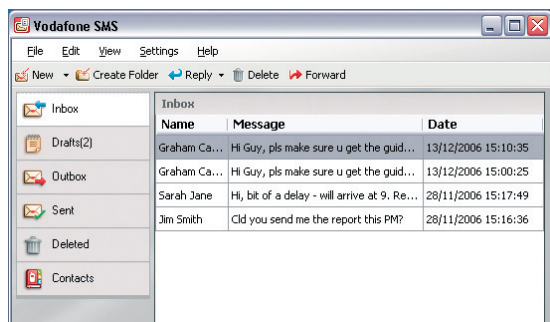
Tip:

Just as you do not need to make a call to send an SMS from a phone, you do not need to open a connection to send an SMS with the Vodafone Mobile Connect software.

With the Vodafone Mobile Connect software, you can send and receive SMS (Short Message Service) text messages straight from your computer.

The program provides an easy way to view messages you have received, write new messages, and manage contact details for frequently-used SMS numbers.

SMS Inbox



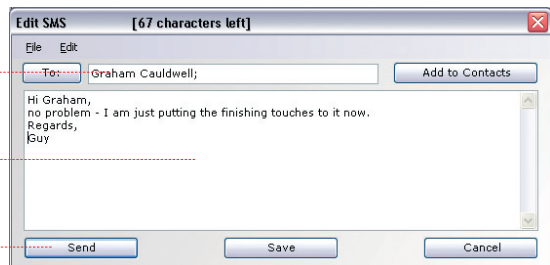
Click "Vodafone SMS" on the navigation bar – on the left-hand side of the main window – to open Vodafone SMS. Click "New" at the left-hand end of the SMS toolbar to create a new SMS text message. After your SMS has been sent, it will be stored in the "Sent" list.

New SMS

Enter the recipient(s) here

Write your text message here

Click on "Send"



Manage SMS Contacts

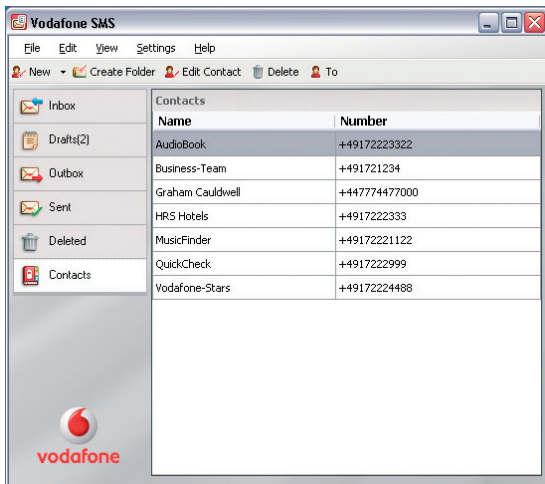


Tip:

Enter your contact numbers in international format, e.g. +447774477000

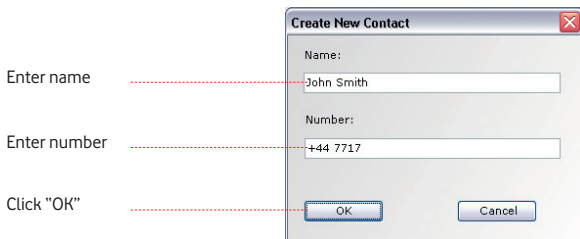
On the left-hand side of the Vodafone SMS window is the SMS navigation bar. Click "Contacts" on the SMS navigation bar to open the Contacts list, in which you can manage names and numbers that you use frequently.

SMS Contacts



Clicking the "New" button on the SMS toolbar will now open a new contact window.

New SMS Contact



Install the Software (Apple® Mac®)

01

Install the software and re-start your Mac.

Insert the Vodafone Mobile Connect software CD, double-click the VodafoneMC_Installer program, and follow the on-screen installation instructions.

When installation is complete, you will be asked to re-start your Mac before proceeding with steps 02 and 03.

02

Insert your SIM into your data card or device.

Your SIM (Subscriber Identity Module) is the small, postage-stamp-sized chip that you received together with your mobile subscriber contract.

Make sure the gold contacts on your SIM match up with the contacts on your device, and your SIM is aligned as shown in the illustration on the device.

03

Attach or insert your device to your Mac.

After you have installed the software, and your Mac has re-started, attach your USB modem, or insert your mobile data card.

Double-click the Vodafone Mobile Connect program icon, wait while the software sets up your connection, and then click Activate. The very first time you run the software, it will ask for your administrator password.

You are now ready to connect. Start the "Internet Connect" program in your Applications folder, and click Connect.

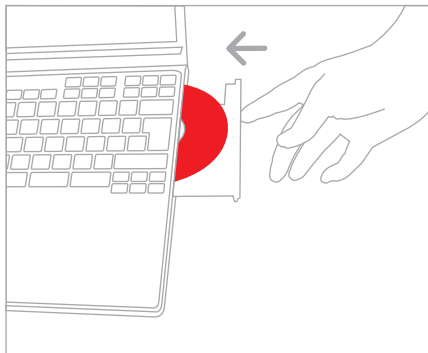
After the initial installation, whenever you want to connect:

- Start Vodafone Mobile Connect to set up your connection
- Click Activate
- Connect using the Internet Connect program.

Tip:

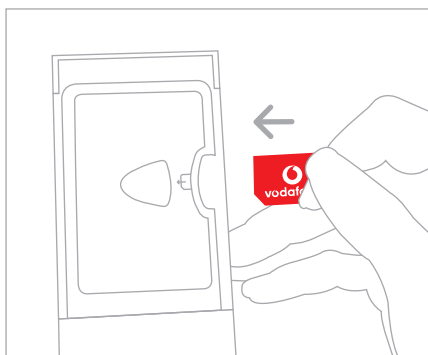
In the Internet Connect program window, there is an option to show device status in menu bar. Selecting this checkbox will constantly show the connection status of your device on the Finder menu bar, including the length of time you have been connected.

01



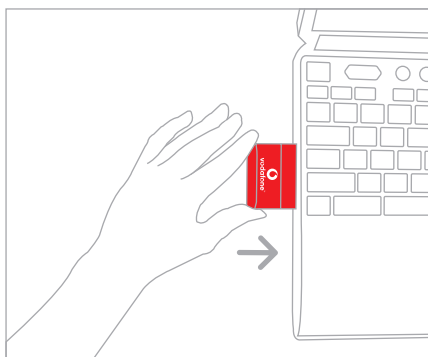
Install the software and re-start your computer.

02



Insert your SIM into your device, e.g. your data card.

03



Attach or insert your device and start the software.

Hints and Tips

If no device can be found

Occasionally, when you have attached or installed a data card, USB modem or phone, the Vodafone Mobile Connect software may not recognise or find it.

- Remove or shut down other devices that may be attached, e.g. Bluetooth devices
- Re-start the Vodafone Mobile Connect software
- Remove and re-attach your mobile phone, modem or data card
- Re-start your computer
- (Windows) Click "Manage Devices", delete the current device from the list, and then add it back in again.

If no network can be found

- Change your physical location: in a building, move closer to a window, move higher up, or go outside
- (Windows) Select "View/View Available Mobile Connections" and see if you can connect to a particular network in the list shown
- Contact Support, and check that data services and roaming are enabled on your account.

If no connection can be opened

- Wait a few minutes and try to connect again. This is most often a temporary problem, especially if an "Error 31" or "Error 619" is referenced
- Re-start the Vodafone Mobile Connect software and your mobile phone, modem or data card
- Re-start your computer
- (Windows) Click "Manage Connections" and select a different Network Preference in the drop-down menu in the Mobile Connections panel
- (Mac) Start Vodafone Mobile Connect, and select one of the other options in the lower part of the main window, e.g. "3G Only".
- If you are using a VPN (Virtual Private Network), contact your company IT administrator
- Contact Support.

If your SIM is not activated

- Refer to your computer handbook for details of how to activate your SIM, or call your mobile network operator's Activation Hotline.

If you have problems when roaming

- (Windows) Select “View/Available Mobile Connections” and try opening one of the connections shown.
- Contact Support, and check roaming is enabled for your account.

When roaming, try and stay on a Vodafone or partner network. A “Welcome SMS” is usually sent to remind you of this. Check the name of the Vodafone network or partner in the Mobile Connections panel or the mini-window.

Selecting a particular network type may improve connection stability

At the limit of some network coverage areas, setting your network preference to “GPRS Only” or “3G Only” may give better results.

- (Windows) Click “Manage Connections” and select a different Network Preference in the drop-down menu in the Mobile Connections panel.
- (Mac) Start Vodafone Mobile Connect, and select one of the other options in the lower part of the main window, e.g. “3G Only”.
- Switch back to your normal preference when you move locations.

Remove your data card when not in use

This helps to avoid damage to your card or to the internal connectors of your laptop.

Check software update preferences

When connecting with the Vodafone Mobile Connect software it is a good idea to set both your operating system and other programs to notify you of software updates instead of downloading them automatically. If updates are downloaded automatically, they may slow down your mobile or WLAN connection, or exceed your data usage limit.

Usage indication

The usage window only displays an indication of your data usage. Please refer to your invoice for the actual amount of data transferred.

Glossary

Activation	In order to open a mobile connection, the Subscriber Identity Module (SIM) in your device must be activated. If you see a message that your SIM needs to be activated, just call your mobile network operator's Activation Hotline to set up an account.
Built-in data card	Mobile data card built into notebook computer. Enables data connections over the mobile phone network.
Data card / USB modem	A device for a notebook computer that is used to open a data connection over the mobile phone network.
Dual-band Tri-band Quad-band	Refers to the frequency bands supported by a mobile device for GPRS and SMS (Short Message Service) in different world regions. 3G/UMTS has a single band worldwide. Most commonly, dual-band refers to the two bands used in most European networks (900 MHz/1800 MHz); tri-band adds support for networks in North America (1900 MHz); while quad-band adds further support for networks operating in the 850 MHz band (principally Latin America).
EDGE	An enhancement to GPRS networks offering higher speeds, although not as fast as those provided by 3G/UMTS, or 3G Broadband/HSDPA.
EV-DO	A high-speed mobile data standard used mostly in the USA. Frequent travellers to the USA should contact their mobile network operator about using special Vodafone Mobile Connect data cards and software in the USA.
GPRS	Standard for transmitting data over mobile telecommunications (GSM) networks. It generally provides wide coverage and moderate data speeds. (General Packet Radio System).
GSM	A widely-used standard for mobile telecommunications (Global System for Mobile communications). According to the GSM Association, GSM technology is supported by over 680 operators in 210 countries and territories.
3G/UMTS	Often referred to as the 3rd Generation of GSM technologies, UMTS (Universal Mobile Telecommunications System) provides higher data speeds.
HSDPA / 3G Broadband	An evolution of 3G/UMTS to provide faster data speeds. Like many fixed-line "broadband" services, High-Speed Downlink Packet Access (3G Broadband) provides a faster download speed than upload speed.
Roaming	Connecting via networks other than your own operator's network. This typically occurs when you are abroad, but is also possible in your own country.
SIM	The "Subscriber Identity Module" is the small, postage-stamp-sized chip that you will have received together with your mobile subscriber contract. The SIM has gold contacts on one side.
WLAN / Wi-Fi	A standard for the wireless connection of computers in a Local Area Network. WLAN, also known as Wi-Fi, is quite fast, but the true speed of your connection will depend on a WLAN's connection to the internet. WLAN is usually built into new notebook computers.

